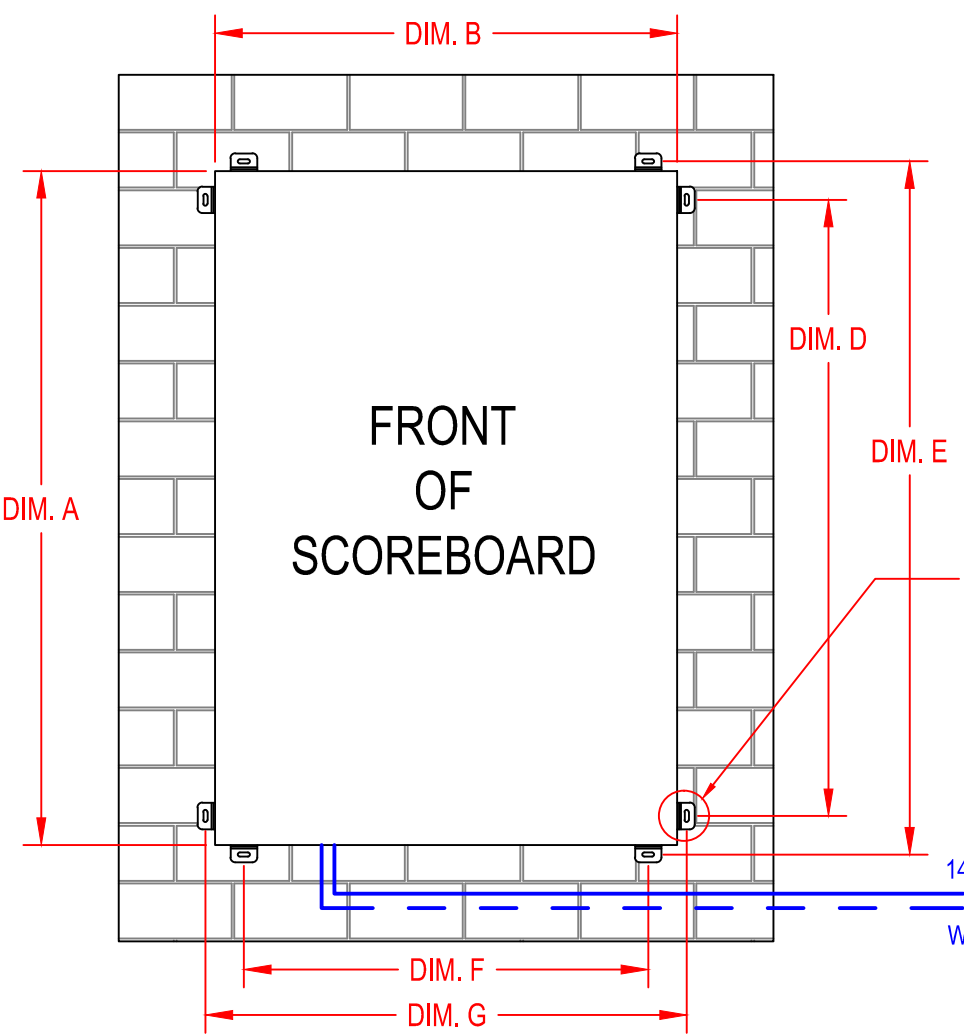
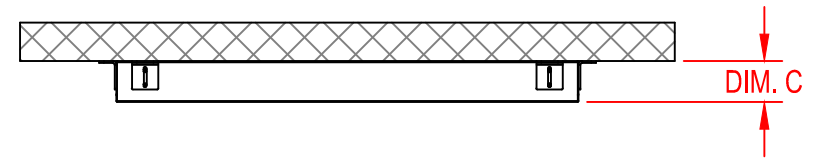


DISPLAY	DIM. A		DIM. B		DIM. C		DIM. D		DIM. E		DIM. F		DIM. G		HANGING WEIGHT	
MS-0140	42.00"	1.067m	48.00"	1.219m	4.25"	0.108m	36.00"	0.914m	44.00"	1.118m	42.00"	1.067m	50.00"	1.270m	50 LBS	23 KG
MS-0149, MS-0111, MS-0112, MS-0141	56.00"	1.422m	48.00"	1.219m	4.25"	0.108m	50.00"	1.270m	58.00"	1.473m	42.00"	1.067m	50.00"	1.270m	60 LBS	27 KG
MS-0150, MS-0113, MS-0142	70.00"	1.778m	48.00"	1.219m	4.25"	0.108m	64.00"	1.626m	72.00"	1.829m	42.00"	1.067m	50.00"	1.270m	70 LBS	32 KG
MS-0157	84.00"	2.134m	48.00"	1.219m	4.25"	0.108m	78.00"	1.981m	86.00"	2.184m	42.00"	1.067m	50.00"	1.270m	80 LBS	36 KG

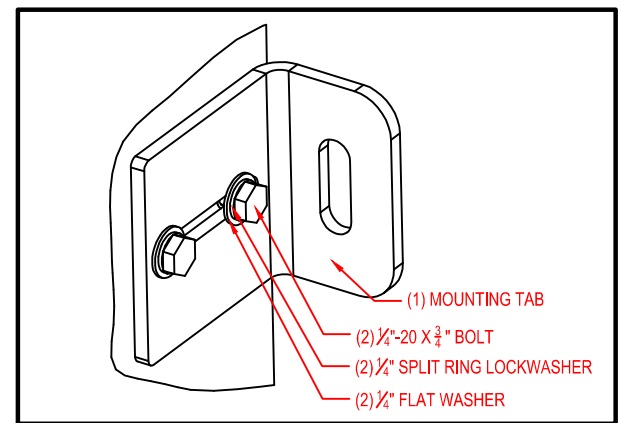
DISPLAY	MAX POWER CONSUMPTION
MS-0149	200 W
MS-0150	250 W
MS-0157	280 W
MS-0111	120 W
MS-0112	150 W
MS-0113	170 W
MS-0140	100 W
MS-0141	120 W
MS-0142	140 W



- NOTES:**
- POWER AND DATA CABLES MUST BE ROUTED IN SEPARATE CONDUIT
  - CTS SUGGESTS 3/4" CONDUIT FOR ALL BURIED CABLE
  - THE DISPLAY IS EQUIPPED WITH A 14' POWER CABLE WITH A NEMA 5-15R PLUG. NOTE THE EXIT LOCATION IS ON THE BOTTOM OF THE DISPLAY. THIS CABLE IS ONLY TO BE USED IN EITHER INDOOR APPLICATIONS OR OUTDOOR APPLICATIONS IN CONJUNCTION WITH AN OUTDOOR RATED RECEPTACLE.
  - IF USING WIRED DATA, TERMINATE DATA CONDUIT TO JUNCTION BOX NEAR DATA JACK LOCATION
  - SCOREBOARD DOES NOT INCLUDE ON/OFF POWER SWITCH. INSTALL OPTIONAL SWITCH/DISCONNECT FOR ABILITY TO TURN SCOREBOARD ON/OFF IF NEEDED OR DESIRED
  - ALL ATTACHMENT HARDWARE TO BE ORDERED SEPARATELY
  - CTS ASSUMES NO RESPONSIBILITY FOR INSTALLATIONS DONE BY OTHERS
  - THIS SIGN IS INTENDED TO BE INSTALLED IN ACCORDANCE WITH THE REQUIREMENTS OF ARTICLE 600 OF THE NATIONAL ELECTRIC CODE AND/OR OTHER APPLICABLE CODES. THIS INCLUDES PROPER GROUNDING AND BONDING OF THE SCOREBOARD

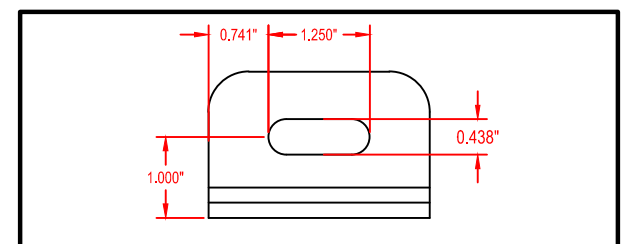
**INSTALLATION PROCEDURE:**

1. SELECT EITHER TOP/BOTTOM OR SIDE MOUNTING TAB LOCATIONS
2. ATTACH (4) MOUNTING TABS TO SCOREBOARD IN LOCATIONS SHOWN, USING 1/4" HARDWARE



DETAIL A  
MOUNTING TAB- SCOREBOARD ATTACHMENT  
4 LOCATIONS

3. SECURE MOUNTING TABS TO WALL/STRUCTURE USING APPROPRIATE HARDWARE
- HARDWARE TO BE SPECIFIED AND APPROVED BY OTHERS



DETAIL B  
MOUNTING TAB- WALL ATTACHMENT  
4 LOCATIONS

A4	PART NUMBER CLARIFICATION	7/10/15	PJS
REV	DESCRIPTION	DATE	APP

THE INFORMATION ON THIS DRAWING IS SUBJECT TO CHANGE WITHOUT NOTICE

**REVISIONS**

THIRD ANGLE PROJECTION

**TRADE SECRET**

The information and data contained herein is secret and is submitted in confidence, and shall not be disclosed, used, or duplicated for any purpose whatsoever without the prior written permission of Colorado Time Systems, Inc., 1551 E. 11th Street, Loveland Colorado, 80537. This legend shall be marked on any reproduction hereof in whole or in part. Receipt of this document shall be deemed to be an acceptance of the conditions specified herein.

DIMENSIONS ARE REPRESENTED AS FOLLOWS: INCH (MM)		DRAWN BY	DATE
TOLERANCES EXCEPT AS NOTED		P.SCHIEL	11/18/13
INCHES	MM	ENG. APPROVAL	DATE
X ± 0.02	.X ±	PROJECT ENG.	DATE
ANGLES ± 1			
DO NOT SCALE THIS DRAWING			
SCALE	NTS	SHEET 1 OF 1	

**TITLE**

5" MULTI-LINE  
FLAT WALL MOUNT  
INSTALL DETAILS

**WWW.COLORADOTIME.COM**

1551 E. 11th. St.  
Loveland, CO 80537  
P: (970) 667-1000  
F: (970) 667-5876  
WWW.COLORADOTIME.COM

**Colorado TIME SYSTEMS.**

SIZE **B** DRAWING NUMBER **S2013-001-052** REV. **A4**