

| SCALE      | 1:4 | SHEET SIZE | A1         |
|------------|-----|------------|------------|
| DRAWN BY   | AL  | SHEET      | 1 OF 1     |
| CHECKED BY | LL  | DATE       | 01/09/2020 |

**TOLERANCES**

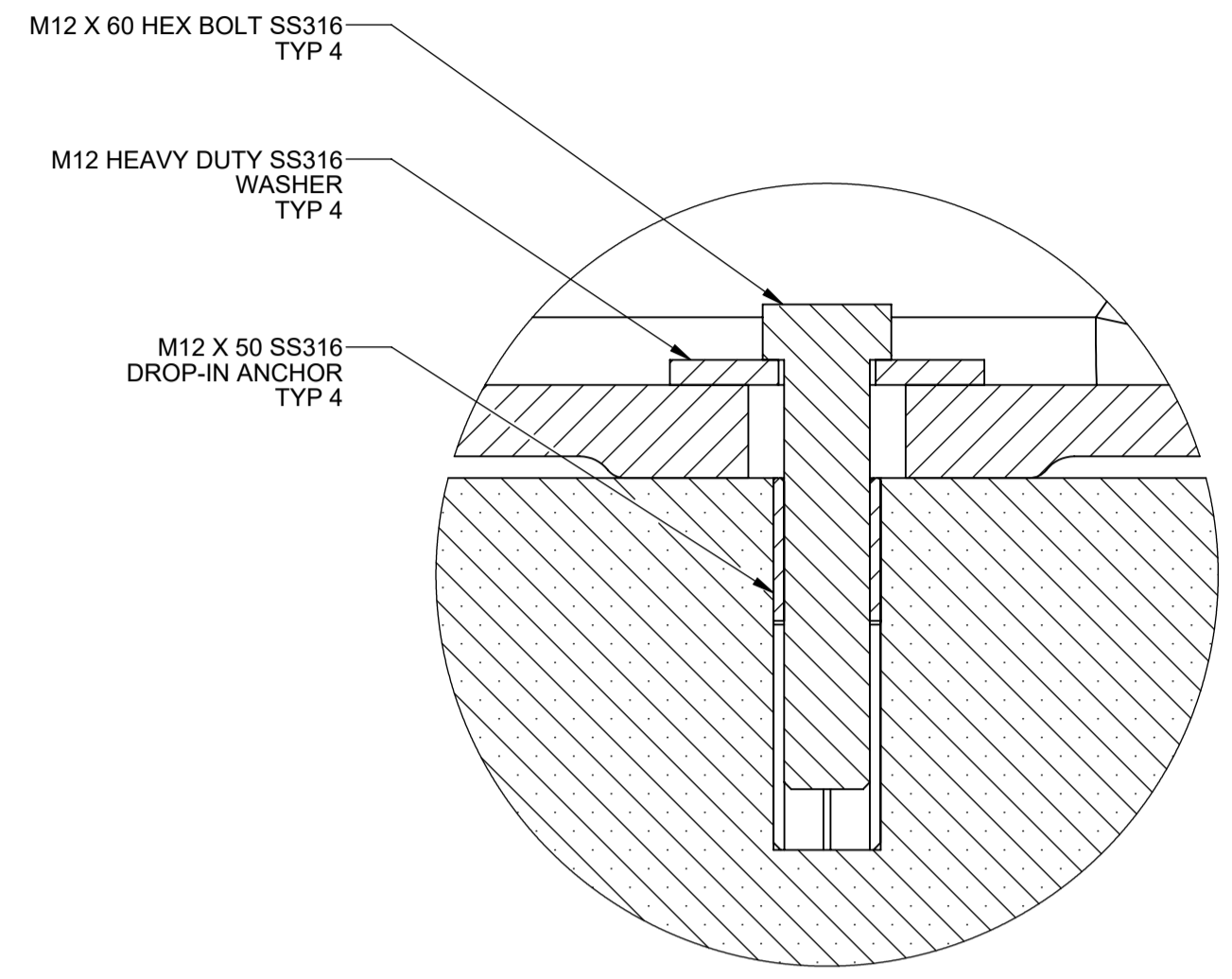
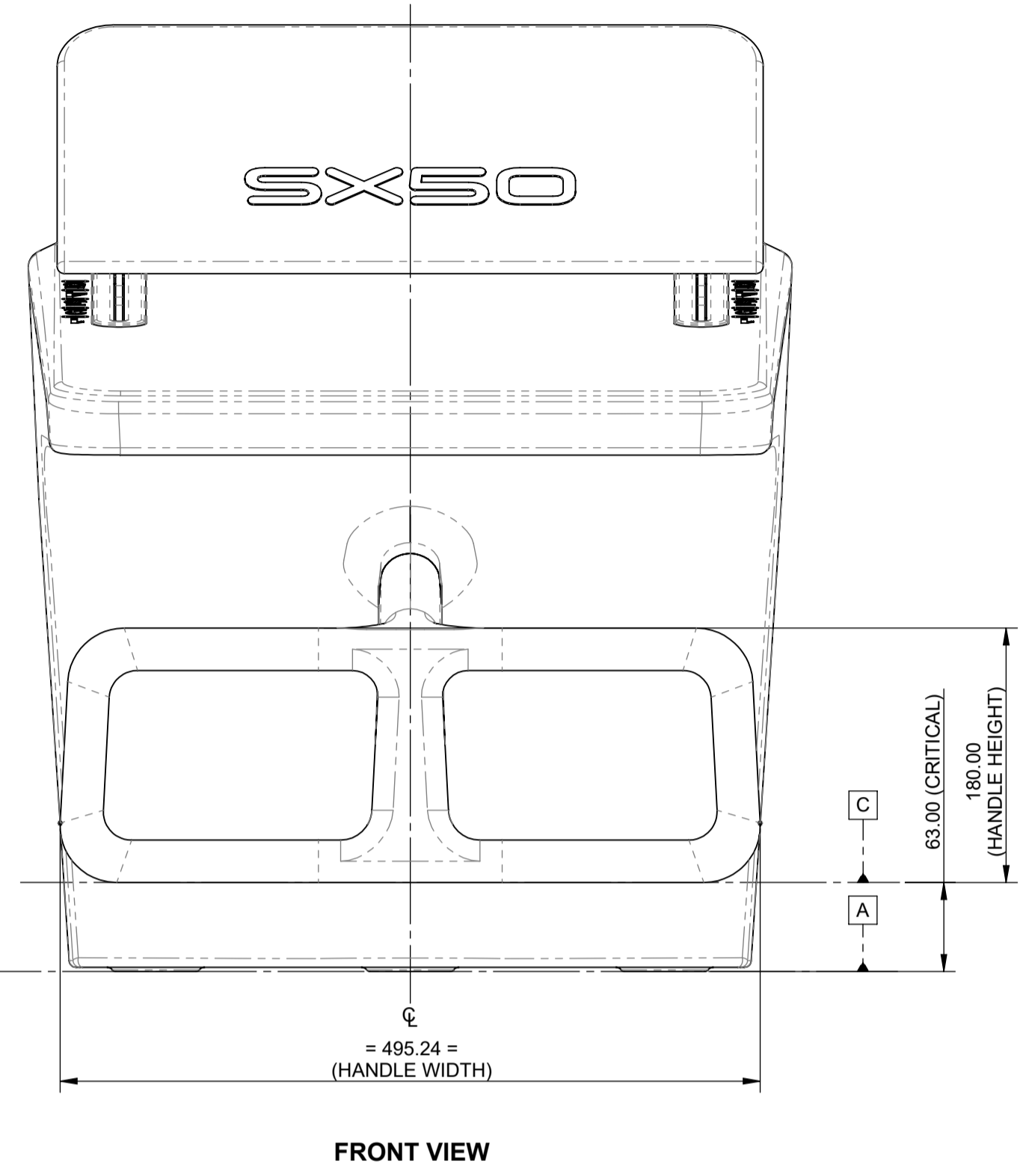
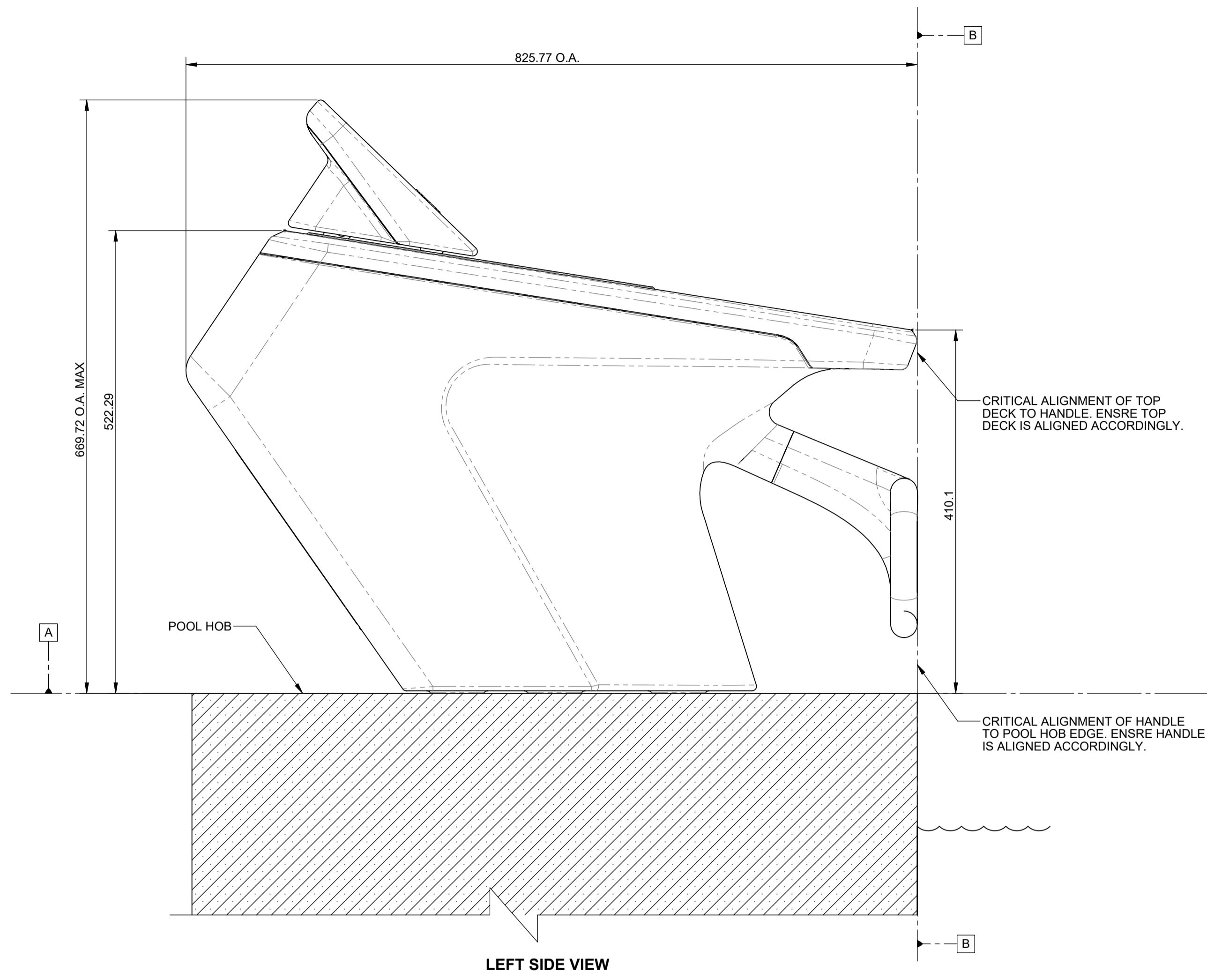
| LINEAR      | ANGULAR      |
|-------------|--------------|
| X.X ±0.20   | X.X ±0.50°   |
| X.XX ±0.10  | X.XX ±0.10°  |
| X.XXX ±0.05 | X.XXX ±0.05° |

GENERAL TOLERANCES EXCEPT WHERE OTHERWISE STATED ON THE DIMENSION ALL DIMENSIONS IN MILLIMETRES DO NOT SCALE DRAWING

**NOTES**  
 THIS DRAWING IS FOR REFERENCE ENGINEERING PURPOSES ONLY. ALL KEY DIMENSIONS AND ANNOTATIONS SHOWN HERE ARE SUPPLEMENTARY TO THE 3D DATA. ALL PHYSICAL GEOMETRY DATA SHOULD BE DERIVED FROM THE SUPPLIED 3D CAD DATA.  
 ANY CHANGES TO THE SUPPLIED 3D CAD DATA THAT ARE REQUIRED TO MANUFACTURE THIS PART TO THE LEVEL OF QUALITY DESCRIBED ABOVE SHOULD CONTACT 4DESIGN FOR APPROVAL.

**REVISIONS**

| ISSUE | DESCRIPTION        | DATE     |
|-------|--------------------|----------|
| A     | PRODUCTION RELEASE | 31/08/20 |



**SECTION A-A**  
**SCALE 1:1**

NOTE:  
 - M12 X 50 STAINLESS STEEL 316 DROP-IN ANCHOR RECOMMENDED.  
 - DRILL HOLE SIZE 15 Ø X 52 DEEP  
 - FASTENING DETAIL TYP 4 LOCATIONS

**PERSPECTIVE VIEWS**

